

## Theme 2 Jobs, Skills & Prosperity

### MSG Programme Period 7 (Apr-Jun 2017) Performance Report

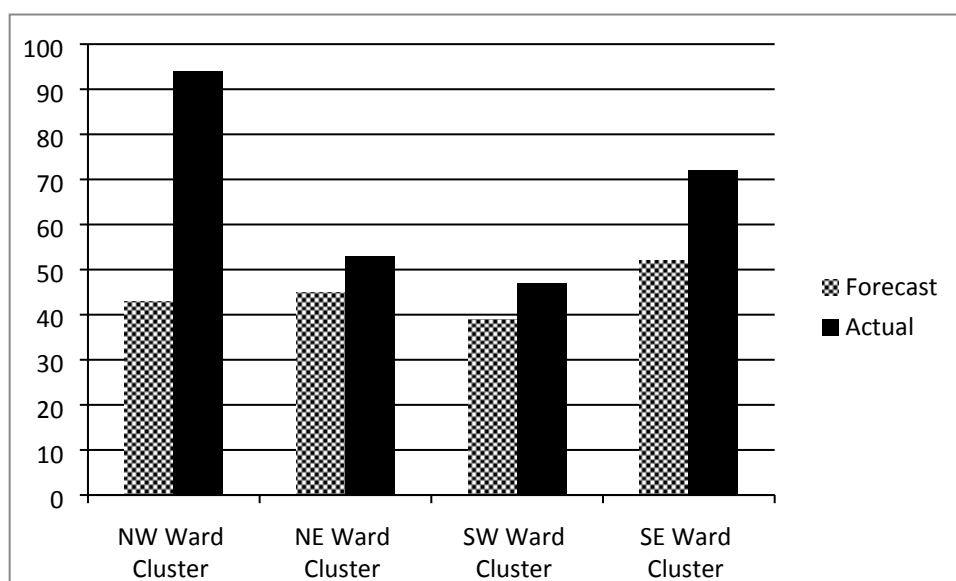
**Theme 2 – Jobs, Skills & Prosperity:** This theme focuses on seeking key outcomes including:

- Measurable increase in the numbers of people moved closer to the labour market and prepared for sustained employment.
- Reduce the numbers of residents in the borough with no qualifications or training
- Improved integration of pathway to work employment support services
- Reduction in numbers of residents negatively impacted by welfare reforms
- Minimisation of the number of residents facing housing repossessions
- Increase in the numbers of residents supported with addressing problem debts
- Increases in number of residents on low incomes receiving their correct benefit /tax credit entitlement
- Empowering residents and building resilience

## Routeways to Employment

### Geographical Breakdown

The table below shows the number of beneficiaries supported during the period April to June 2017 by Ward Cluster:



## Appendix 4.2

| NW Ward Cluster   | NE Ward Cluster  | SW Ward Cluster   | SE Ward Cluster  |
|---|--|---|--|
| <ul style="list-style-type: none"> <li>Bethnal Green</li> <li>Spitalfields &amp; Banglatown</li> <li>St Peter's</li> <li>Weavers</li> </ul> | <ul style="list-style-type: none"> <li>Bow East</li> <li>Bow West</li> <li>Bromley North</li> <li>Bromley South</li> <li>Mile End</li> </ul> | <ul style="list-style-type: none"> <li>Shadwell</li> <li>St Dunstons</li> <li>St Katherine's &amp; Wapping</li> <li>Stepney Green</li> <li>Whitechapel</li> </ul> | <ul style="list-style-type: none"> <li>Blackwall &amp; Cubitt Town</li> <li>Canary Wharf</li> <li>Island Gardens</li> <li>Lansbury</li> <li>Limehouse</li> <li>Poplar</li> </ul> |

### Routeways to Employment Project Portfolio – D&R

| No. of live projects – Apr-Jun 2017 | No. of projects classed as <b>GREEN</b> | No. of projects classed as <b>AMBER</b> | No. of projects classed as <b>RED</b> |
|-------------------------------------|---|---|---------------------------------------|
| 9                                   | 8                                       | 1                                       | 0                                     |

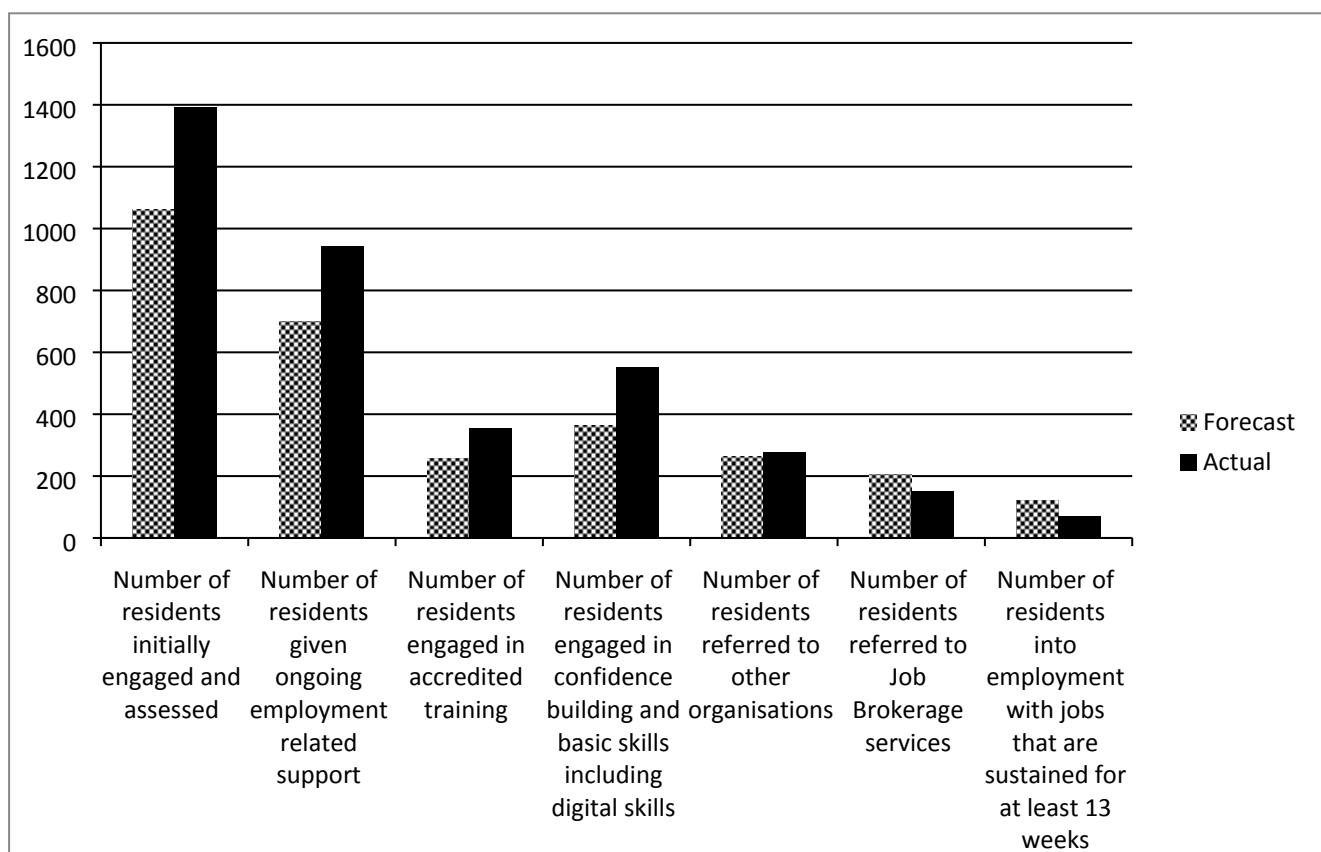
There are 9 active projects in this category; 8 of which are classed as 'Green' and are on course to meet the agreed expenditure targets, service outputs and outcomes as indicated in monitoring reports received.

1 project is Amber:

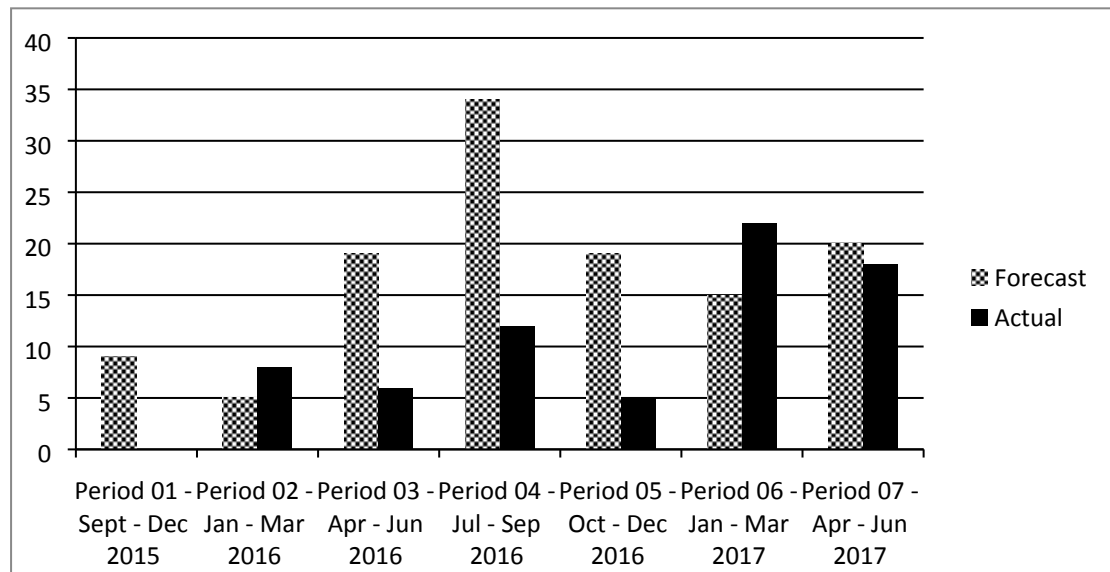
#### **Osmani Trust - Education & Employment**

Under performance against key targets for this period has resulted in an Amber rating.

### Key Routeways to Employment outputs to date – Period 01 - 07



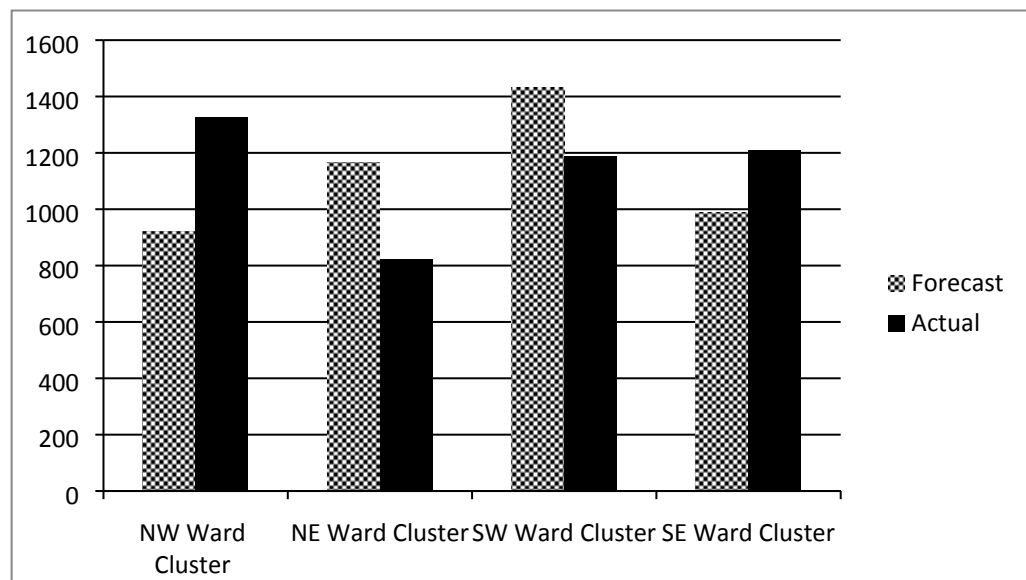
**Number of residents into employment – Period 01 - 07**



**Social Welfare Advice Services**

**Geographical Breakdown**

The table below shows the number of beneficiaries supported during the period April to June 2017 by Ward Cluster:



| NW Ward Cluster   | NE Ward Cluster  | SW Ward Cluster   | SE Ward Cluster  |
|---|--|---|--|
| <ul style="list-style-type: none"> <li>Bethnal Green</li> <li>Spitalfields &amp; Banglatown</li> <li>St Peter's</li> <li>Weavers</li> </ul> | <ul style="list-style-type: none"> <li>Bow East</li> <li>Bow West</li> <li>Bromley North</li> <li>Bromley South</li> <li>Mile End</li> </ul> | <ul style="list-style-type: none"> <li>Shadwell</li> <li>St Dunstons</li> <li>St Katherine's &amp; Wapping</li> <li>Stepney Green</li> <li>Whitechapel</li> </ul> | <ul style="list-style-type: none"> <li>Blackwall &amp; Cubitt Town</li> <li>Canary Wharf</li> <li>Island Gardens</li> <li>Lansbury</li> <li>Limehouse</li> <li>Poplar</li> </ul> |

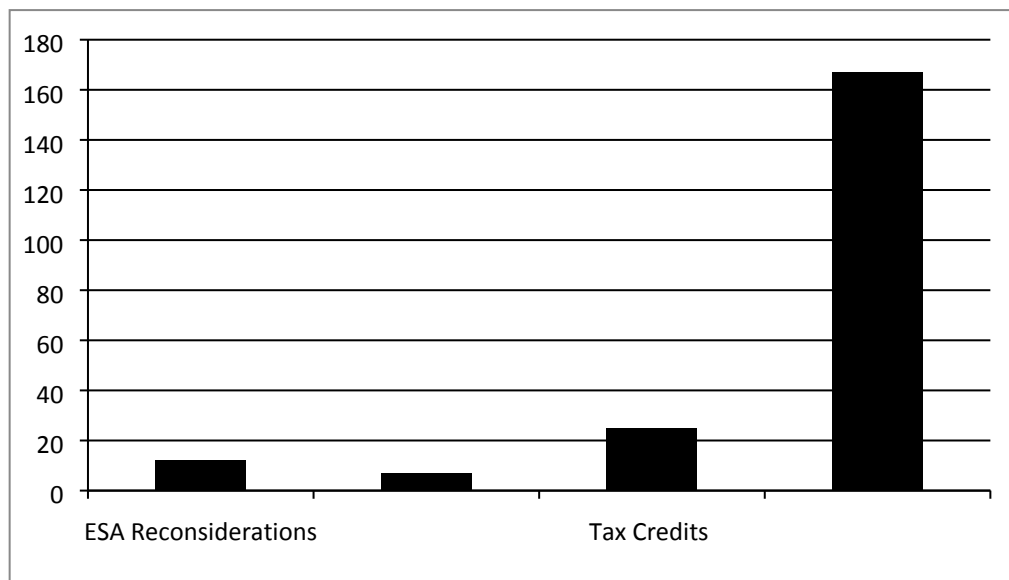
**Social Welfare Advice Services Project Portfolio – Place**

| No. of live projects – Apr-Jun 2017 | No. of projects classed as <b>GREEN</b> | No. of projects classed as <b>AMBER</b> | No. of projects classed as <b>RED</b> |
|-------------------------------------|---|---|---------------------------------------|
| 11                                  | 11                                      | 0                                       | 0                                     |

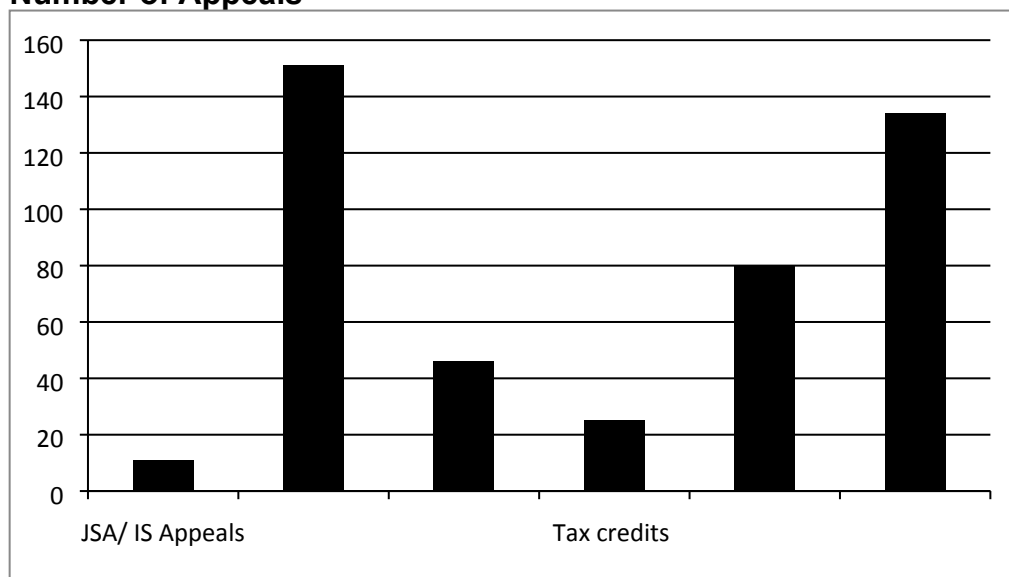
There 11 active projects in this category; all of which are classed as ‘Green’ and are on course to meet the agreed expenditure targets, service outputs and outcomes as indicated in monitoring reports received.

**Key Social Welfare Advice outcomes achieved in the quarter include:**

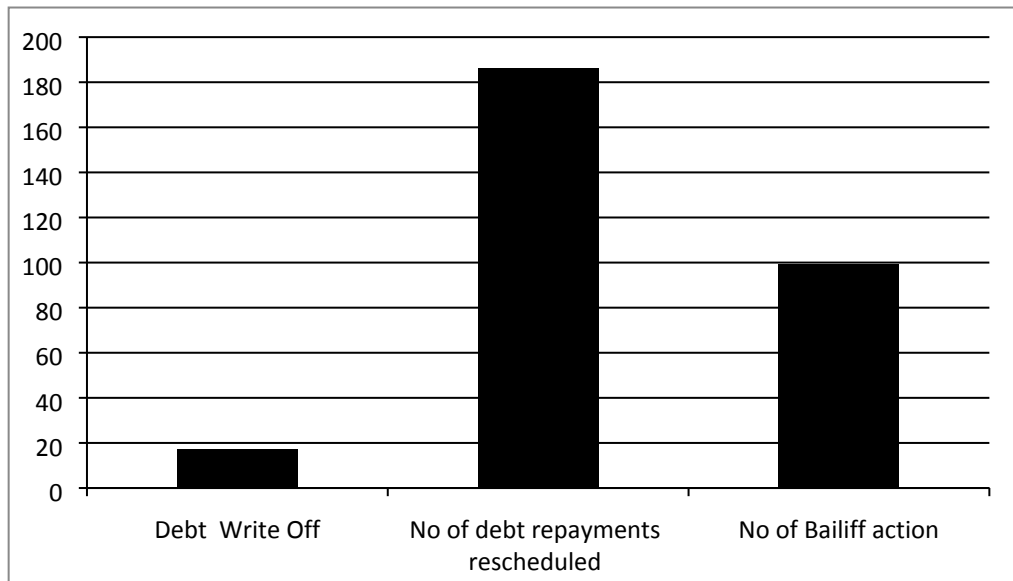
**Number of Reconsiderations**



**Number of Appeals**



### Debt Outcomes



### Housing Outcomes

